

## National Annual Meeting 2026



On 4th June, members of the Board of Trustees, Link Delegates and observers gathered at Goodwood Bowls Club, Leicester, to watch the live streaming of the NFWI Annual Meeting 2025. The meeting was chaired by Jeryl Stone Chairman of NFWI and a member at Warwickshire.

This year, members debated and voted on two important resolutions. The first, **Accessible Public Toilet Facilities to Promote Dignity, Health and Social Inclusion**, called for accessible, clean and free public toilets for all. The resolution highlighted the importance of public facilities for women, older people, disabled individuals, parents and carers, and encouraged WIs to work with local authorities and community organisations to help reverse the decline in provision. The resolution was passed with an overwhelming **95% majority**.

The second resolution, **Action on Women's Homelessness**, focused on reducing women's homelessness, improving the quality of temporary accommodation, and supporting women at risk of becoming homeless. Members were encouraged to support homelessness organisations in their local communities and campaign to ensure that all women have a safe place to call home. This resolution was also strongly supported, passing with a **92% majority**.

Before each vote, delegates heard from speakers presenting arguments both for and against the resolutions, helping members make informed decisions.

The meeting also featured inspiring guest speakers, including Anne Boden, Julia Gillard, Jacinda Ardern, Professor Michele Dougherty and Mary Lewis, who shared their experiences and insights with members.

A special thank you goes to Marion Heywood of Humberstone Heights and Belgrave WI, who kindly provided refreshments throughout the day and assisted with both the set-up and clear-down, helping to make the event such a success.



<p><b>Federation Chairman</b> Glenice Wignall glenicewignall@lrfwi.org</p>	<p><b>Federation Treasurer</b> Mary Hobbs maryhobbs@lrfwi.org</p>	<p><b>Federation Secretary</b> Lois Mckinder fedsec@lrfwi.org</p>	<p><b>Office Manager/ Accounts</b> wihouse@lrfwi.org</p>	<p><b>Finance</b> finance@lrfwi.org</p>
--	---	---	--	---



### Leicestershire & Rutland Federation of Women's Institutes

incorporated in England and Wales as a Company limited by Guarantee No. 02769771 Charity Reg No. 1016 766

**WI House, 135 Loughborough Road, Leicester, LE4 5LQ**

**Tel: 0116 2661342 Email: wihouse@lrfwi.org**

**Opening hours: Mon-Wed 9.30am—2.30pm**

[www.leicestershire-and-rutland.thewi.org.uk](http://www.leicestershire-and-rutland.thewi.org.uk) or scan QR code

Find us on Facebook: Leicestershire & Rutland Federation of WIs



## From the Board



The Board would like to thank all delegates who attended the Annual Meeting and represented our Federation's 109 WIs. The meeting went ahead successfully, with multiple delegates attending on behalf of WIs to ensure members were represented.

Planning for the 2027 ACM is now beginning, and we look forward to sharing further updates with members soon.

**Glenice Wignall**

Chairman Leicestershire & Rutland Federation of WI

## From the House



We are pleased to share that staffing at WI House has improved in recent weeks, and we would like to thank all members for their patience, understanding and continued support during this time. Whilst we are still working towards a permanent staffing solution, we are doing our best to ensure the office remains running smoothly and that members continue to receive support and assistance when needed.

WI House is currently open Monday to Wednesday, from 9.30am until 2.30pm, and members are always very welcome to call in, whether for enquiries, event information, resources, or simply for a friendly chat. We appreciate everyone's kindness whilst we continue to move forward and will keep members updated with any future developments.

**Thank you**

## County News Calendar

COUNTY NEWS ISSUES 2025/26	DEADLINE FOR ITEMS TO BE SUBMITTED	RELEASE DATE FOR COUNTY NEWS ISSUES (3 <sup>rd</sup> Mon of month)
SEPTEMBER EDITION	1 <sup>st</sup> August 2026	17 <sup>th</sup> August 2026
OCTOBER EDITION	1 <sup>st</sup> September 2026	21 <sup>st</sup> September 2026
NOVEMBER EDITION	1 <sup>st</sup> October 2026	19 <sup>th</sup> October 2026
DECEMBER 2026/ JANUARY 2027 EDITION	1 <sup>st</sup> November 2026	16 <sup>th</sup> November 2026

## Membership Committee

The LRFWI Membership Committee is responsible for assisting WIs with any help they require. I hope you find the following items useful. Mandy Cutler, Membership Committee Chair.

### Federation Quiz 2026 – Friday 3rd July



**£7 per person – teams of four.**

Are you up for a challenge? Will your general knowledge help you to reign supreme? Then gather together members, friends and family and enter a team at one of the four venues in this year's Federation Quiz.

**ARET Centre Loddington LE7 9XE**

**Botcheston Village Hall LE9 9FF**

**Swinford Village Hall LE17 6AZ**

**Thorpe Acre Church Hall LE11 4LF (FULL)**

**7pm for 7.30pm.** Each team must have 2 WI members, the event is open to non-members, male and female. Light refreshments included. Bring your own drinks if you wish.

If you would like to book for this event, please **contact your WI secretary** or email [wihouse@lrfwi.org](mailto:wihouse@lrfwi.org) with a booking form and pay by BACS by 25th June Bookings will not be accepted after this date. Please state clearly the venue you wish to book and if you have any accessibility requirements.

### WI Life magazine online – including audio version



In case you're not aware, the WI Life magazine is available online on the My WI website.

Just go to the very bottom of the Homepage and you will see a link for My WI. Click on this and it will bring up various issues of the magazine – click on the one you want.

Simply select **Click to view in full screen** on the issue you want and the arrows to turn forward or back the page.

You can also select the **audio version of the latest issue of WI Life Magazine.**

### New Guidance for Guests, Visitors and Sub-groups



On the 8<sup>th</sup> April, an email was cascaded from our Federation Secretary to all WI Secretaries about new guidance for the above groups.

**The full guidance can be found on My WI** , under Running your WI, Resources and Guidance; here is the link:

<https://mywi.thewi.org.uk/running-your-wi/members-resources>

Here are some selected points:

**Sub-groups** must be self-financing. Some sub-groups are open only to members, some are open to both members and non-members. .

## New Guidance for Guests, Visitors and Sub-groups

If a WI wishes to open a sub-group to non-members, then it should be open to all to avoid discrimination. You should consult with your own members and the NFWI advise taking advice from the NFWI before doing so.

**Sisterhood groups** Separate guidance is in place for Sisterhood groups, which are sub-groups that are open to all and are attached to existing WIs or federations; these groups aim to offer support and welcome to the transgender community.

**Open Meetings, Guests and Visitors** The NFWI usually refer to 'guests' as anyone who attends an 'open meeting', whereas 'visitors' is more about women seeing if they wish to be members. Visitors usually visit up to three times before joining. However, this is up to individual WIs to decide.

If WIs are opening some of their meetings to guests, they must bear in mind two things – firstly, they must maintain a clear member benefit (for example, keeping the majority of their meetings for members only and only opening those with a wider appeal). Secondly, they must follow the principle of 'open to all', which means, for example, that you would need to apply the same rules to anyone who wished to attend.

## Denman Trust Grant—Free First Aid Courses



The first of the MHFA Champion and British Red Cross Physical First Aid courses have taken place at Hinckley and Market Harborough, in March and April respectively.

Both courses attracted the maximum numbers of participants and were well received.

### MHFA Champion Course

The senior trainer (working for MIND) Paul Stuart- Thomson is excellent – knowledgeable, personable, and willing to share his own experiences.

**100% of participants indicated they would recommend the course to others and feedback also showed a big confidence and knowledge uplift.** All participants receive a certificate of attendance.

The One Day MHFA awareness and skills course qualifies you as an Adult MHFA Champion and will teach you to:

- Recognise the main signs and symptoms of common mental health issues
- Provide initial support
- Guide a person towards appropriate professional help
- Be mindful of your own wellbeing
- Develop an understanding of how you can create and maintain a healthier workforce or community
- Knowledge and confidence to advocate for mental health awareness
- Skills to support positive wellbeing



# British Red Cross

## Physical First Aid for Adults Course

Our trainer was Carla Ballington, a former nurse with a wide range of experience.

It is a tightly paced course, condensing a wide range of first aid treatments (about 16). Delivery is through discussion, information, and practical sessions.

The quality of tuition is very good. There are no tests to pass on this course as the emphasis is on awareness.

All participants are given a First Aid Workbook and Certificate of First Aid Learning.



## Arts and Crafts Committee

Unfortunately, the Crewel Workshop has been cancelled. However, our Spring Dabble Day was a great success, with members enjoying a variety of creative activities and plenty of inspiration.

The committee is already looking forward to the Autumn Dabble Day, and bookings are now open. The cost is **£25 per person**, and we hope many members will join us for another enjoyable day of crafting, learning new skills, and socialising with fellow members.

## Monthly Draw

**Congratulations to our Monthly Draw winners!**

### May 2026

**1st Prize £25 Anne Allison—Groby WI**

**2nd Prize—£15 Jean Lord—  
Humberstone Heights & Belgrave WI**

**3rd Prize £10 Elizabeth Jarvis—  
Groby WI**

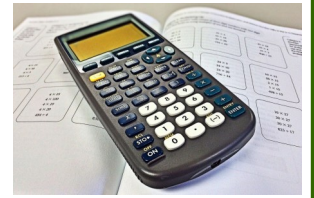
**Thank you to all of the members  
who have supported the Federation  
by buying a Monthly Draw  
ticket!**



## Finance House & Management

### Would you like to be an IFE?

What is an IFE? The initials IFE stand for Independent Financial Examiner and it's pronounced 'iffy', though these folks are far from iffy!



LRFWI has a scheme whereby members (and non-members) are trained to become IFEs to examine the accounts of our WIs at the end of the financial year. As financial statements have to be prepared and checked before WIs annual meetings, most of the work will take place during August, September and October.

IFE's are highly valued by the Federation, and the work they do is very important. If you'd like to join our band of IFE's, please do get in touch. Full training for this role will be given.

For further details please contact the Office on 0116 266 1342 or [wihouse@lrfwi.org](mailto:wihouse@lrfwi.org)

### Does your WI need an IFE?

If your WI requires an IFE for this year, please respond to the notice included in this mailing and return it to WI House by 31st July

### Treasurer's Training

Treasurer's training has been confirmed for 3rd September at WI House. Please ensure places for this are booked by 30th August

## Fundraising Committee

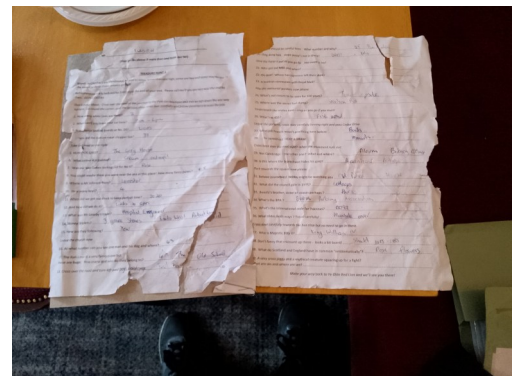
The Fundraising Committee's second Musical Cream Tea with Roy Carter, took place at Roots on 12th May and proved to be another great success. Members enjoyed an afternoon of entertainment, music and delicious refreshments in a friendly atmosphere. The event was very well received by those who attended, with

many positive comments about both the performance and the venue. Thank you to everyone who supported the event and helped make it such an enjoyable and successful afternoon.



## Leisure Committee

Thank you to all the ladies who joined in the four Treasure Hunts at Market Bosworth, particularly the hardy bunch on May 19th who had the only wet day. WI ladies are made of stern stuff and they battled on despite the dampening rain. The answer sheets were very soggy by the time they reached the end as the picture shows!



## Events — What's On?

### **2026:**

**Friday 3rd July**— Federation Quiz , ARET Centre Loddington LE7 9XE,  
Botcheston Village Hall LE9 9FF,  
Swinford Village Hall LE17 6AZ,  
Thorpe Acre Church Hall LE11 4LF **(FULL)**

**Friday 24th July**— SOS Charity Fashion Show, Syston Rugby Club, Queniborough LE7 3FE—£5

**Monday 27th July**—Guided Walk Ashby, St Helens Church LE65 1AA —£10 **(FULL)**

**Wednesday 5th August**—Charity Shop Challenge, The Royal British Legion, 14 Thorpe End Melton  
Mowbray LE131RB—£10

**Thursday 3rd September**—Treasurer's Training, WI House, 135 Loughborough Road LE45LQ—£5

**Saturday 12th September**— Mental Health First Aid Champion, Church Rooms, Quorn,  
Loughborough, LE12 8DP—Free

**Thursday 17th September**— (Physical) First Aid Course for adults, Mary Forryan Centre, St Peters  
Catholic Church, Leicester Rd, Hinckley LE10 1LW—Free

**Saturday 19th September**—Lampshade Making, WI House, 135 Loughborough Road, LE4 5LQ—  
£25

**Wednesday 7th October**— (Physical) First Aid Course for adults, All Saints Church, Church Street,  
Oakham, LE15 6AA.—Free

**Saturday 10th October**—Autumn Lunch, Devonshire Place, 78 London Road, Leicester LE2 0RA—  
£34

**Monday 26th October**—Ghost Walk, Frankie and Bennys, St Peters Square LE14SA —£10 **(FULL)**

**Tuesday 27th October**— Ghost Walk, Frankie and Bennys, St Peters Square LE14SA —£10

**Saturday 7th November**— Autumn Dabble Day, The Langton Village Hall LE8 0PJ—£25

**Saturday 28th November**— Stratford Christmas Market, Coaches from WI House, Burbage &  
Oakham—£20

---

**Secretaries/Treasurers—Don't leave your booking until the closing date.**

**You can add to the booking by phone at a later date if further members want to attend.**

If you want to book as an individual, use the booking form on our website under: [Federation Downloads](#)

—email the form to [wihouse@lrfwi.org](mailto:wihouse@lrfwi.org) or call 0116 2661342.

---

Booking forms can be downloaded from the website or requested by emailing [wihouse@lrfwi.org](mailto:wihouse@lrfwi.org). Please don't wait until the closing date to book, as events can fill up before the deadline.

If you are paying by BACS, please notify [finance@lrfwi.org](mailto:finance@lrfwi.org) once payment has been made.

Please note that cancellations after the closing date cannot be refunded; however, your place can be transferred to another member.

**Please do not turn up to events without a confirmed booking from federation**

## Around the Counties

### Swannington WI



Swannington WI members regularly collect 'small change' at monthly meetings to support Bright Hope, a local day centre providing free support to people of all ages with life-limiting conditions or reduced quality of life. Bright

Hope is especially close to our members' hearts, as several have family members who have benefited from its care. Megan McMenamain, Operations Manager, is pictured receiving the cheque from Viv Evans, President of Swannington WI.

When our booked speaker became ill just before our April meeting, we were fortunate to secure Peter Proudlove from the Leicestershire and Rutland Bat Group at very short notice. His talk, *Bats are Amazing*, explained different bat species, their lifestyles and feeding habits, as well as the Group's important rescue work caring for injured and underweight bats until they can be returned to the wild. We learned a great deal and many myths about these fascinating creatures were dispelled.

### Little Bowden WI

For our May meeting we welcomed Stephen Rankine, a volunteer with Harborough Woodland, who spoke about the organisation's work restoring biodiversity and helping to mitigate climate change. Leicestershire has one of the lowest levels of woodland cover in the UK, at around 4%, a situation made worse in recent years by Ash Dieback.

Harborough Woodland aims to increase woodland cover, improve air quality, reduce flood risk and create more space



for nature by bringing communities together at planting events. Working with schools and volunteers, they planted 13,119 trees and whips across 16 events during the 2025/26 season, bringing their total since 2020 to an impressive 55,599. Stephen also explained the important role trees and hedges play in natural flood management, helping to absorb and slow the flow of water.

### Gopsall Villages WI

At our meeting in May, we welcomed eight guests to our Open Meeting to hear Lesley Piper speak about 'The aftermath of the Titanic'. Lesley explained that she wasn't a qualified



historian but, having read a book titled *'And the Band Played on'* written by Christopher Ward some years ago, she had been so moved by it that she decided to compile a presentation that she could share with others. Lesley began with a quiz asking questions about the statistics for the Titanic's fateful voyage in April 1912: the number of passengers, how many days at sea before the sinking, how many survived, the lack of sufficient lifeboats, which ship came to the rescue, how long it took to get there. The quiz was followed by a PowerPoint presentation with archive photographs and then by memoirs, read by members, written by people who were involved in the tragedy. The Titanic sat undiscovered on the ocean floor until its discovery in 1985 by Robert Ballard. An interesting and very moving meeting.

### Anstey WI

Members of Anstey WI have been busy enjoying county activities, including the Market Bosworth treasure hunt, two darts matches and the Spring Lunch with guest speaker Charles Hanson.

We also hosted a successful SOS Fashion Show fundraiser, enjoyed by all who attended. The event was followed by a light-hearted toilet-themed quiz compiled by Jan Darby, which caused plenty of laughter and proved very popular.

May also saw our annual flower arranging, cookery and craft competitions. Congratulations to trophy winners Liz Heggs, Heddy Prior and Sue Crook.



## Around the Counties

### Broughton Astley WI

At our May meeting as part of the Bystanders Can Be Lifesavers campaign, Martin Matkin from St John Ambulance guided us through CPR and Defibrillator use.

There were Resusci dummies, as well as training Defibrillators for members to get acquainted with.

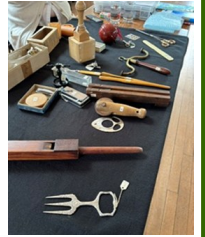
He explained the difference between a heart attack and a cardiac arrest, that 80% of incidents occur outside of a medical setting, that women are less likely to receive bystander CPR resulting in lower survival rates, mostly due to clothing removal reservations and fear of inappropriate touching accusations.

CPR is physically exhausting, so you might think you'd be unable to help, but he said having the knowledge would enable you to guide someone else through this potentially lifesaving process.



### Glenfield WI

Glenfield WI enjoyed a fascinating and entertaining talk by Bob Neill on "Bits and Bobs", featuring a collection of unusual artefacts that members were challenged to identify. While some items, such as a candle snuffer and glove stretcher, were familiar, others proved far more puzzling. Much laughter accompanied the guessing, and members were pleased with their detective skills. (The mysterious object with two hooks turned out to be a vintage barrister's or judge's wig stand!)



Members also discussed the two resolutions to be voted on at the June AGM and agreed that their delegate from Kirby Muxloe WI, attending via Zoom, should use her discretion when voting.

The afternoon included presentations of flowering orchids and signed cards to the President and Secretary in recognition of their recent milestone birthdays. Looking ahead, next month's speaker will be Hamish Whitely on "Growing up with Grandma", followed in July by a members-only musical afternoon with cream tea.

### Glenfield Park

May is the month for debating and voting on NFWI resolutions, and this year members considered two proposals. The first focused on the decline in accessible public toilets and the impact this has on dignity, health and social inclusion. Members learned about efforts to improve provision, including community toilet schemes where local businesses make facilities available to the public.

The second resolution highlighted the challenges faced by homeless women, many of whom become homeless through circumstances beyond their control and can remain hidden from support services. Members discussed the need for greater action and improved support.

Following a thoughtful debate, members voted in favour of both resolutions, which will now go forward to the NFWI Annual Meeting in June.



On a lighter note, members also enjoyed a birthday lunch at the Queen Vic in Syston, with good food, good company and a few well-earned treats.

### Witherley WI

Nina welcomed members and reflected on events enjoyed during April, including the Spring Lunch at Devonshire House. Despite guest speaker Charles Hanson being delayed by traffic, he soon had the room laughing with stories from his career as an auctioneer.

Members also looked ahead to upcoming events, including a Book Sale in June, the St Giles Hospice Lunch and *Anything Goes* at Kilworth House in July. Nina reported on the recent Group Committee Meeting, where concerns regarding Group Show competitions and presentation cups were discussed and will be reviewed.

The meeting also focused on this year's NFWI resolutions. Following presentations by Ann W and Nina, members discussed the proposals on accessible public toilets and women's homelessness. Members voted in favour of the first resolution and against the second, with the results being forwarded to the NFWI Annual Meeting in June. The afternoon concluded with a quiz and refreshments, thanks to Beryl D, Jan R, Ann W and Pat R.

## Around the Counties

### Leire WI

In April, we had an evening of all things Pizza organised by our member Christine who began with a talk on the history of pizzas; flat bread pizzas were being consumed 500 years ago in Rome, Egypt and Greece, with the modern version being from Italy. The Margherita Pizza represents the colours of the Italian flag and, in 2001 a pizza created by the Neapolitans was even delivered into space! (Hope there wasn't a delivery charge!) The Hawaiian pizza originated from Canada and the largest ever pizza measured 1,200 square metres.

Christine then followed with a demonstration of Pizza making based on a Jamie Oliver recipe using prepared dough from the Northern Dough Company and a selection of ingredients. We then made the pizzas in small groups, these were delicious. The evening was rounded off with a pizza related quiz with prizes and everyone enjoyed the hands-on evening and pizza tasting, washed down with a glass of wine.



The winner of the "Something Italian" Competition was Chris Pope with her Italian silk scarf.

### Coleorton WI

On Wednesday 6th May Coleorton WI met at the Beaumont Centre and welcomed 49 members and 2 visitors. Once Jerusalem had been sung and Chris thanked for the flowers the business was dealt with including minutes and a variety of activities and events on WI flyers for members available for members to try. The two resolutions were voted on and recorded by the secretary and arrangements for our forthcoming outings to Amazon and Kelmars Hall were finalised.

We then introduced our speakers Elaine and Julia who are affectionately known as the Potty Plotters who between them manage an allotment in Derby. They gave a hilarious talk about their allotment escapades and their love of growing all things, from loofahs to flowers, was inspirational. In amongst our laughter of which there was much (think female Peter Kays) we learnt tips and tricks of the trade. Who knew how versatile a pair of tights could be! Afterwards they judged the competition and the raffle was drawn and members enjoyed chatting with each other over refreshments provided by the rota members.

### Oakham WI

Oakham WI's May calendar had an outdoor feel to it, and whilst the weather has been unsettled, we have been lucky enough not to have any activities rained off.

We started the month with a bluebell walk through the beautiful Barnsdale Wood, on the edge of Rutland Water. This is an annual event for us, and we never fail to wonder at the beautiful swathes of bluebells. We also enjoyed a walk at Burrough on the Hill and enjoyed seeing all the new lambs, as well as the beautiful scenery. Finally, we went on a guided walk to Merry's Meadow, a nature reserve with beautiful orchids and other flowers, together with numerous birds and butterflies, all of which were pointed out and identified by a volunteer from Leicestershire and Rutland Wildlife Trust.

We all felt that our May activities benefited both our physical and our mental health and vowed to continue throughout the year, starting in June when we have an amble to see the Rutland Water ospreys, a visit to the open garden at Nevill Holt and a ramble to Fort Henry.



### Loughborough Ladies WI



The Loughborough Ladies enjoyed an evening creating magical light jars using jam jars, decorated serviettes and stickers, glue and strings of lights.

It was a relaxed and fun evening spent in excellent company, crafting, chatting, supping tea/coffee and eating homemade cake.



## Around the Counties

### Wigston Magna WI

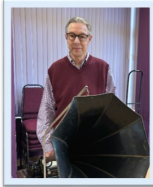
Our speaker in April was Paul Read - "Dressing Them Up". Paul works as a principal dresser in the theatre. He helps performers change costumes and demonstrated how this is achieved in such a quick time. False shirt fronts, Velcro and magnets are used instead of buttons and zips so clothing can come off with a quick tug. He wears all black and works in the dark so he can't be seen and he's worked with Helen Mirren, Ian McKellan and Steve Coogan to name but a few. Paul gets to know the secrets of the stars like who likes a tot of alcohol before going on stage, who are divas and who are having affairs etc but he is very tactful and didn't name names.



We also enjoyed a skittles night with 20 members attending. Good value, great food and lots of fun, and cash prizes for 1st, 2nd and 3rd. A booby prize of a cabbage was presented to the lowest scorer too.

### Hinckley Canalside WI

John Langham was our speaker in May. His subject was 'How listening to music has changed'. He told us he worked for BBC Radio Leicester when he was younger and about how people used to listen to music many years ago, showing us pictures of items like phonographs, music boxes, radios, gramophones and radiograms. In 1952, we had the first record sales charts and people could watch music programmes on tv and juke boxes appeared in pubs. In 1964, Top of the Pops started being broadcast on the BBC, finishing in 2006. John said that when the Beatles recorded their first singles, they only got 1p for each record sold. Nowadays, a lot of artists make their money by performing in huge stadiums. John had a tableful of equipment that he had collected over the years, including an old phonograph that belonged to his grandparents, that we could look at. It was an interesting talk and some of his photos brought back memories of things we had in our houses, when we were young.



### Avon Group

Deep in the South of the Counties the Avon Group continues to thrive and meet up on a regular basis to socialise and try new experiences.



I have recently attended a monthly meeting of each of the Institutes in the group and had a very enjoyable time

My experiences ranged from a Celebration Afternoon Tea, Scottish Country Dancing, A talk about the History of Rainbows Hospice and an Introduction to Art at the Archway Gallery in Lutterworth. All very different but all great fun and enjoyable

On Tuesday 19<sup>th</sup> May we held our Annual Rose Bowl Quiz

There were questions on all sorts plus a Marathon round identifying pictures of Board Games

North Kilworth were the Hostesses for this occasion and did us all proud with a fabulous supper and hot drinks

My thanks go to everyone for taking part and for your continuing support of the Group

### Cossington WI

Cossington WI members spent a brilliant afternoon doing Archery. They all agreed it was really good to try a new activity.

30 members also went to the theatre to see the Full Monty at the MMC at Mountsorrel. Lifts were arranged for members unable to drive

Both events were organised by our very busy Social Committee.



## Around the Counties

### Great Bowden WI

At our monthly meeting we discussed in detail the Resolutions and then voted on them. After this we had a fun Bingo session with Chocolate Oranges for the winners.

To complete our meeting members had provided a Dutch supper which was enjoyed by all.



Later in the month several members returned to Lamport Hall to visit the gardens which they had not been able to see on their visit last year to the Hall because they were closed due to the high temperatures. One of our members is a guide there and she was able to give a comprehensive tour of the gardens identifying plants and their habitats.

### Ullesthorpe WI

After discussing the two resolutions at the May meeting, we were delighted to welcome our 50<sup>th</sup> Member. Since May 2025 we have 9 new ladies.



The new members are enjoying taking part in all our events, and it has been a welcome boost to our group. Our members also made their annual donation to the Lutterworth Food and Hygiene as well as holding a plant auction to raise funds for our 100<sup>th</sup> anniversary.

We enjoyed an outing to Lutterworth Museum where the volunteers explained the history of the town and both Sir Frank Whittle and John Wycliffe. It is an excellent museum, and a lot of time has been spent bringing the museum up to date. We hope to have a guided walk around the town as there are some interesting places to be discovered.

We were delighted to be shown Scrapbooks of Lutterworth's two closed WIs. The volunteers had found them in their Archives.

## Denman Report

### Bystanders can be life Savers

Chris and Jane of Illston-on-the-Hill WI recently attended a physical first aid course run by the British Red Cross. The aim of the course was to give people confidence to attempt first aid as they may be the only person on hand to help. Even though you thought you couldn't put a large heavy person in the recovery position, once you'd been shown the correct way it was easy!

We were challenged to deal with patients suffering from heavy bleeding, head injuries, unresponsive and not breathing, possible strokes and many other scenarios. Sometimes we played the patient and at other times the "rescuer".

It was quite a relief when coffee time came round – complete with chocolate biscuits! However, afterwards there was more work to do and more patients to deal with, including heart attacks, severe allergic reactions, burns, choking and many more situations.

Whilst it was not easy to fit a 3 day first aid course into 4 hours, most of the basics were covered and we were even shown that the defibrillator tells us exactly what to do. Rest assured ladies of Illston, we were feeling pretty confident!

We were also told about "what3words". This can be invaluable if you are out walking, climbing or in the countryside as you can give the emergency services your three-word location enabling them to locate you precisely. Well worth looking into. The app assigns every 3m square in the world a unique combination of three random words.

Our thanks go to Uppingham WI of hosting the event.

# Advertisements

## Monica (Wing WI) Member

Contracted by the Rutland Council to provide Home based care



Do you need help with:

- Domestic cleaning
- Personal Care
- Medication and meals
- Disability support
- Hospital to home discharge
- Live in carer
- Respite care and holiday support
- Help with pets



For a CQC registered, safe and trusted carer  
Call Monica 07716183474  
Office 01536605365

Percorra North Northamptonshire  
2 Tresham Street  
Kettering NN16 8RS

### Advertising Rates 2026

Charity rate £5.00

Commercial rate (including WI members business advertising)

Months	1	3	6	12 = 10% off
Small	£16	£47	£95	£171
Medium	£21	£63	£126	£226
Large	£32	£95	£189	£340

Please pay on receipt of invoice only.

Please send material for County News to **WI House** by email: [fedsec@lrfwi.org](mailto:fedsec@lrfwi.org) or post to arrive by the **FIRST** of the preceding month at the latest. **Any WI announcements can be made in County News.**

We do not accept any responsibility for any adverts published in County News.



### MARTIN TIBBLES

#### PAINTING & DECORATING SERVICES

For all your home and Exterior re-decoration requirements by a qualified tradesman.

**Covid Vaccinated**

Contact Martin on

**0116 2910489 or 07855 412 945**

*Free estimates and advice given.*

*Excellent references*

*nearly 40 years experience*

*with*



Creating big smiles  
*all round*

01858 540 317

01572 898 147

0116 298 4744

[homeinstead.co.uk/mh](http://homeinstead.co.uk/mh)



Each Home Instead® franchise office is independently owned and operated.

Wanted by Restorer, pre 70s furniture, woodwork-ing tools and wood, any condition, painted, broken, woodwormed or parts of. Teak, Oak, Pine etc. Char-ity shop rejects also. Tel Paul 07895451158 or email [pwin2457@gmail.com](mailto:pwin2457@gmail.com)

