

From the Board of Trustees...



Happy New Year

I was born in Rochester, Kent and married in 1972 moved to Swinford in 1982. Both children went to Spratton Hall School, then on to boarding school so I had plenty of time on my hands because I also gave up work in 1976 when my son was born. This is where I first joined the WI in Swinford in 1982, firstly becoming treasurer then becoming president for ten years. I was also Group Convener (now called Group Secretary) for the Avon Group for ten years.

My first County Committee was catering with Vi Bennett. Wendy Groves invited me to join the Home Economics Committee in 1985 where I became chairman of HE in 1995 until 2018 and attended Board meetings as a committee chairman. Finally, I was elected to the Board of Trustees in 2000. My husband died in 1994, I remarried in 1996 and moved to Arthingworth, joining Kelmarsh Harrington and Arthingworth WI in Northamptonshire as well as joining Great Bowden WI.

In the 1990s I started cooking for WI Markets in Lutterworth. In those days there were 13 markets. It later became Country markets and now there are only two markets Glenfield and Melton. I stopped cooking when Lutterworth closed but I am still the County Country Markets secretary and also Board Of Trustees representative for them.

The Shows committee was another committee I joined with Barbara Gill catering at the Rutland show, Leicester show and Blaston show- what fun we had but was hard work.

In the 1990s I went to Denman to become a cookery judge and later a preservation judge. I also did a few years going to WIs to do cookery demonstrations.

I have been on the fundraising committee for BOT now for a few years.

Life is very difficult for me since the passing of my second husband Douglas three years ago. He was a very good WI husband as he used to cut the hedge outside WI house, drive the van to the shows help us set up and always there at the shows and very supportive of the WI.

Leicestershire & Rutland Federation is a wonderful organisation to belong to. There is something for everyone – if you are not a member you do not know what you are missing! Come on let's make this a bumper year with membership.



<p>Federation Chairman Glenice Wignall glenicewignall@lrfwi.org</p>	<p>Federation Treasurer Linda Martin lindamartin@lrfwi.org</p>	<p>Federation Secretary Sandra Woodward fedsec@lrfwi.org</p>	<p>Accounts Assistant Anila Patel finance@lrfwi.org</p>
--	---	---	--



Leicestershire & Rutland Federation of Women's Institutes

incorporated in England and Wales as a Company limited by Guarantee No. 02769771 Charity Reg No. 1016 766

WI House, 135 Loughborough Road, Leicester, LE4 5LQ

Tel: 0116 2661342 Email: wihouse@lrfwi.org

Opening hours: Mon-Thurs 9.30am—1.30pm

www.leicestershire-and-rutland.thewi.org.uk or scan QR code

Find us on Facebook: Leicestershire & Rutland Federation of WIs



Membership

The WI Advisers and our helpers are ready to help any WI with questions or problems that arise.

Looking to Encourage New Members

At a recent promotional event we had enquiries about where local WIs held meetings. It was unusual that some of these potential Members were in the younger age range who you might have expected to search online and they often didn't know about WIs meeting close to where they lived. It made us think that as well as promoting ourselves on Social Media should we also make use of good old posters to tell local women where we are and what we have coming up. Remember if we don't shout about where and what we are about, we may be losing out on potential Members. We need to make use of every way we can to get more Members to join us.

My WI

Have you had a look at MY WI page on the NFWI website recently? It is worth logging on and having a look particularly if you are a new officer in your WI. You can find the WI Handbook there, full of lots of information to help you run your WI and you can often find answers to questions you have and tips to help your WI run smoothly. There are a variety of other things on there as well, from crafts to resolutions and essential information. You need to make sure your email address is entered on the MCS by your MCS person before you start trying to log on. **If** you have a problem getting on to MY WI there is a tutorial on the NFWI webpage that may be able to help you out, if not the WI Advisers can point you in the right direction. It is so useful to get the correct answer to a query rather than rely on what someone thinks the answer is, and know that you are correct.

WI House News

A hello from the WI office!

Hello and a short introduction from me as the new Federation Secretary, Sandra Woodward.

I have had the pleasure of working for WI 3 whole weeks already and I have had such a warm welcome. I'm getting some insight into the variety and creativity of all of the WIs across the region. My previous role was working for Leicestershire County Council for the last (oh my) 19 years in children's services. I have 2 teenagers age 14 and 15 of my own and care for my Mum who doesn't live too far away. I enjoy all sorts of other activities and you may see my electric moped parked up at WI House when you visit! I do look forward to working with you all and please do use WI House as an opportunity to have a cuppa and catch up with fellow members if there's a group of you...just drop me a line.

Best wishes for 2023! Sandra



WI House - A Warm Welcome

WI House is open to members 9.30am-1.30pm Monday to Thursday. Members are welcome to visit for as long as they choose. Tea and coffee are available. If you need a warm space this winter we are here to welcome you!

No more paper tickets!

From January 2023 we will only be issuing paper tickets for exceptional events such as the Annual Council Meeting. All other events will have places and details confirmed to WI Secretaries with a list of attendees on the door to ensure those attending have booked.

- Please ensure all bookings are made through your Secretary or Treasurer, not directly with WI House.
- Bookings will only be accepted if a booking form is completed (available on the website in Download section).
- You must be booked in order to attend an event unless the flyer states otherwise.

May Meetings

Please be aware that the National Annual Meeting will be held on May 25th 2023. If your WI meets late in the month you will need to bring your Resolution discussion and voting forward. This will give you time to contact your delegate with your voting instructions.

Sue Mottram

Federation Resolution Adviser

Subscriptions 2023/2024

Subscriptions have risen by £2 to £46

They are due April 2023

Please note WIs still have discretion on reducing subscriptions to allow inclusivity—this is your choice.

We found the Copse at Billa Barra Hill!

On 4th November members from Birstall and Wanlip, Earl Shilton Afternoon, Burbage, Countesthorpe and Country Markets went to see how the trees had grown since the planting in 1998. Yvonne Curtis had photos of the original planting which was helpful in identifying the spot as it has changed over the years.



Searching for Trees

Diana Lee

Countesthorpe WI & Country Markets Chairman.

I've often wondered if the twigs we planted at Billa Barra in 1998 grew.

It was a memorable day for me, it was very wet, our car would not restart after the planting—so the lunch had all gone when we arrived.

I had enquired at WI House to see if anyone knew if the trees had grown, no one could recall the event. The records have now been found, so on Friday 4th November a small group of members and husbands embarked on a search.

This time we were blessed with a sunny morning, after several false starts and consulting a set of photographs taken by Yvonne Curtis, the former WI markets advisor, we were able to recognise a row of pine trees and we had found the copse.

I remember the ground was difficult to dig with lots of rocks, 258 saplings were planted some dedicating WIs past members and Country markets.

The trees are now well developed, with a surrounding fence.

Billa Barra hill is now a very well planned area with lots of footpaths though grassy areas and woods. There is a small car park just off the A511. Worth a visit if you live in the area. We need to record the planting in some way, to mark the 25th anniversary.

Sue Lobb's Quiz

"A QUESTION OF DEGREE" QUIZ 2022

A huge thank you to everyone who took part in this quiz which did much better than I thought it would given its short 'sell-by' of only a few weeks. Altogether, it has raised £183 for Federation funds which is an excellent result. 65 entries were received, out of which 17 were all correct and the first one of these drawn out at random came from Julia of Thorpe Acre WI, who has now received her £25 prize. Well done Julia!

If you sent an SAE or gave an email address with your entry, your paper or the answers have been returned to you. Do remember that even if you don't complete your quiz sheet, it's always worth sending it in to me with an email address or an SAE because that way I will always respond with the answers after the closing date. You should send it in anyway with a £1 coin attached if you are on my Subscribers' list of course.

If you'd like to go on to my Subscribers' list, just send me an email via WI House headed up: "Quiz Subscribers" and I'll tell you how it works. Additionally, if you don't already have a copy then again, send me an email and I'll get one back to you by return or alternatively, if you are down at WI House, you can pick one up in Reception and put a £1 in the jar.

Thanks to all Quizzers for your continuing support in 2022, and best wishes for a Happy and Healthy 2023.

Easy Fundraising

Did you know that whenever you buy anything online you could be raising free donations for the Federation with easyfundraising?

All you need to do is:

go to easyfundraising.org.uk

Search for our cause

'Leicestershire and Rutland Federation of Women's Institutes'

Every time you shop online, go to easyfundraising first to find the site you want and start shopping.

After you've checked out, the retailer will make a donation to us at no extra cost to you!

Thank you for your support.



Dabble Day 5th November



Setting up and preparing activities for the Dabble Day

The Dabble day was enjoyed by ladies across the Federation They had a chance to make cards, cross stitch, sew and have a go at macramé. There was plenty of tea, coffee and biscuits to keep everyone going and of course the day finished off with a raffle.

Jerusalem Jammers



Jerusalem Jammers are delighted to be out and about again. We raised over £750 at our annual tea dance for Children In Need and this may well have increased by the time you read this. We are always pleased when we get help with our communal dances – especially when they end up joining us! We are always on the lookout for new dancers and musicians.



Contact our secretary Sue for further information and bookings.

01455 458107

suecrockett55@gmail.com

or google us to see what others say about us.



Monthly Draw Winners!

Congratulations to our Monthly Draw winners for July!

1st Prize £25

No.130

Stella Kind, Newbold Verdon

2nd Prize £15

No. 108

Sue Young, Thorpe Acre WI

3rd Prize £10

No. 24

Helen McGarrigle, Greetham WI

Thank you to all of the members who have supported the Federation by buying a Monthly Draw ticket!



Ukraine Cardigans



A lady phoned WI House and asked if we would like some baby cardigans, her mother-in-law was a prolific knitter and knitted cardigans for her friend to sew together. Unfortunately, her friend had stopped sewing them up around 1995 and there were a few to finish off. The lady donated 9 boxes of cardigans and up to now 56 have been finished. Beverly Blackburn and Maxilyn Geary took these, with some blankets and other bits to the Ukraine donation centre, after they had made an appeal for these type of goods. The centre gave thanks for the kind donation.



Federation Events

Annual Council Meeting 2023

Leicester Grammar School, Great Glen, Leicester
LE8 9FL

Saturday, 18 March 2023

10.30 am – 3.30pm

Tickets: £15 each (£7.50 for stewards)

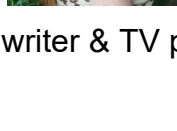
Doors open at 9.30am to shop at the stalls, view competitions and Committee displays. Please bring a packed lunch. Drinks are available for sale and you may wish to bring your own reusable cup.

Our speakers for the Annual Council Meeting 2023 are:



Ruth Goodman

Social & domestic historian & TV presenter



Eric Knowles

Antiques expert, writer & TV presenter



Federation Competitions

Leisure Activities Committee

Margaret Johnston Trophy Competition 2023



The theme of this year's writing challenge is ...

'My Platinum Jubilee Celebrations'

in no more than 500 words. Your entry should be typed, if possible, on A4 paper. Please complete the slip on the flyer, do not write your name on your entry.

Entry fee: £4 Closing date: 9 January 2023

The winning entry will be published in County News, posted on Facebook and displayed at the Annual Council Meeting in March 2023.

Please return your entry with the tear off slip on the flyer and a cheque for the entry fee (payable to LRFWI) to WI House on or before the closing date.



Brenda Barnett Trophy 2023

Theme: A Family Celebration

Three different craft items to be displayed on a board 22" x 22" (56cm x 56cm), with an optional back board but no side boards are permitted. Accessories are allowed. A card of intent must be provided explaining the interpretation of the theme and choice of items displayed.

Exhibits will be displayed at the Annual Council Meeting 2023 and will be featured in County News.

Entry fee £6.00 (non-refundable).

Closing date for entry forms: 26 January 2023

This competition is open to WI Groups or individual WIs of the Leicestershire & Rutland Federation. ONE entry per Group/WI allowed.

Full details and entry form on flyer.

INDIVIDUAL COMPETITIONS

Open to all members

ADULT COOKERY

**Schedule: Victoria Sandwich on a plate
(see schedule for recipe)**

The winner be awarded the Leicestershire tray for 1 year

CHILDREN'S COOKERY

**Schedule: 3 Decorated Cupcakes
£1.00 per entry**

Class 1: Age 7 and under; Class 2: Age: 8 to 15

The winners in each class will receive a small prize

CRAFT

Schedule: A Card Inspired by Poetry

In any medium, no larger than A5. The title of the poem should be written on the back. Envelope or box optional.

£1.00 per entry on the day, no entry form required.

The winner of this competition will receive gift voucher

FLOWER COMPETITION

"THE JOSÉ SMART AWARD"

**Schedule: A fresh spring flower arrangement
in an egg cup
£1.00 per entry**

The winner of this competition will be awarded the José Smart cut glass trophy for one year

Cookery, Craft and Flower exhibits to be brought to Leicester Grammar School on Saturday, 18 March 2023 between 8.30am & 9.45am. Competitor must make arrangements for collection of the item after the meeting.

The entrance fees can be paid on the day, but please let WI House know you are entering by completing the slip on the schedule and returning it to WI House by Friday 3 March 2023.

Hope Against Cancer

FIGHTING CANCER – RIGHT HERE, RIGHT NOW!

Hope Against Cancer is Leicestershire and Rutland's local cancer research charity.

Founded in 2003, our focus is on beating cancer by funding research into the early detection, treatment and prevention of cancer.



Working in partnership with our local universities and hospitals, over the past 20 years we have funded around 70 research projects tackling many different forms of cancer, helping make Leicester an internationally-recognised hub of expertise in cancer research and treatment.

We have also funded both the creation and recent expansion of the Hope Cancer Trials Centre at the Leicester Royal Infirmary, where patients can receive the most advanced therapies and treatments for their cancer.

Together we offer innovative, improved pathways to better outcomes for local people and we are extremely proud that, in our time, we have seen cancer survival rates for our region improve significantly.

We need YOU to continue and expand our work! It is our 20th anniversary next year and we're looking for WIs who would like to help us celebrate in style by joining in our "20 in '23" Challenge: why not host a fundraising Twen-Teas event, or keep your group fit by getting sponsored to walk 20 minutes a day for a month, or engage one of our interesting speakers for your group? Get in touch with jessica@hopeagainstcancer.org.uk to discuss your ideas and get support.



Warning ZONE

LIFE SKILLS CENTRE

We need volunteers! Why not visit us to shadow a session and find out more about the brilliant work we do?

At Warning Zone children hear real life stories and experience learning through interactive zones led by our volunteer guides. The centre is split into two. There is a general safety zone – fire, arson, railways, personal safety, water, electricity, road safety to name a few! And E-Safety - topics include online phishing, cyber bullying, sharing and use of inappropriate images, online grooming and more. Both areas explore themes such as peer pressure, criminal responsibility and consequences, the importance of talking to a trusted adult, being a good friend, and mental health and wellbeing.

Warning Zone wouldn't function without the generosity of our wonderful team of volunteers who deliver lessons and experiences to the children from Monday to Friday throughout the academic year. Each day is split into a morning and afternoon session. This equates to 10 sessions a week that we require volunteers. Each session needs approximately 10 volunteers, so that is around 100 volunteers a week! Some of the volunteers stay for the day, while others just come for a morning or afternoon session. The minimum requirement is just 5 hours per month (2 sessions).

Volunteers range from 16 to 80+ years old, from all walks of life. The day at Warning Zone is ideal for parents with children at school, fitting in with school drop off and pickups. It's also great for people that have retired and are looking for a way to use their extensive, valuable skills and experience. It really is a rewarding volunteering opportunity and a great way to give back to the community. There is a dedicated space for volunteers where appreciation is shown from biscuits to days out and achievements are celebrated with certificates at various stages.

We warmly invite you to visit us to find out more about what we do and to shadow an experienced volunteer. **To book a visit or request more information please email volunteer@warningzone.org.uk visit www.warningzone.org.uk or call 0116 262 9739. We would love to meet you and show you the fabulous work of our charity.**

Around the Counties

Loughborough Ladies

We have set up our Bug Tree for the Christmas Tree Festival at All Saints Church, Loughborough. The decorations include bees, beetles, butterflies, worms, spiders and dragonflies all hand-made by our members. The theme was chosen to highlight how important these little creatures are to our planet and how their numbers are diminishing with potentially devastating consequences for life on Earth.



Sileby

We were joined by Liam from Lords Exotics accompanied by his many reptiles! Liam works at the new reptile shop in Sileby and we invited him to our meeting to tell us all about the animals. Our bravest of members also got to hold the animals if they wanted, which included snakes, geckos, a turtle and even a tarantula!



Sheepy Magna



Our speaker for November was our very own Georgina. We were treated to a demonstration of a Christmas table decoration using greenery, flowers and various accessories to add that Christmas sparkle.



Then it was down to us all to try to put this into practice! We had a great time making our versions, it was totally amazing how varied the designs were.



Glenfield Park

John Martin came to talk about "the History of Crime Fiction". He is a retired librarian and oddly enough he used to come to Glenfield Library once a week when it was in the old building. However, I digress. I bet you can't guess what John's favourite genre of book is. Well! what a surprise it's crime fiction! I bet you didn't guess. He went through the genre chronologically. Apparently the first crime books to be published was as late as 1847 when Edgar Allen Poe wrote 3 short stories although our ancestors probably sat round the fire telling tales of crimes that had taken place. Wilkie Collins was also an innovator with his book "The Moonstone." By the beginning of the 20th Century Arthur Conan Doyle appeared on the scene with his brilliant but flawed hero Sherlock Holmes. These were immediately a great success and were eagerly anticipated. Conan Doyle tired of writing the stories and killed off Holmes. Shock, horror! There was such an outcry, that Sherlock was resurrected, and The Hound of the Baskervilles was published. In the 1920s Agatha Christie appeared with her first book The Mysterious Affair at Styles and Hercule Poirot was born. The years between the 40s and 60s were the golden age of crime writing with authors like Ruth Rendell, PD James, Ngaio Marsh and Dorothy Sayers, to name but a few. One interesting fact to emerge was that John Creasey was probably the most prolific writer as he had 300 books published, using a variety of pseudonyms. How on earth did he manage to think up all the plots and did he repeat himself. Unless we read all the books we'll never know. I could go on as we learnt so many interesting facts. Here are a couple more. The crime genre is the most popular section in the library, The Hound of the Baskervilles is John's favourite book, and he finds some modern writers too gory. The talk generated a lot of discussion and several members confessed that crime novels were their favourites

Broughton Astley

After the completion of our Annual General Meeting, we had a demonstration of CPR and the use of a defibrillator. As we are fortunate in now having five defibrillators sited throughout the village, we thought it wise to know how they are operated and Phil Burton, Broughton Astley's Group Scout Leader, kindly agreed to show us the procedure. Phil started off with demonstrating CPR, which is essential to start as soon as you find a casualty who is not breathing normally.



Using the DR ABC protocol (Danger, Response, Airway, Breathing, Circulation), phoning 999 for an ambulance and accessing a defibrillator, we were shown how to do chest compressions correctly, and it is quite hard work! Then we got on to seeing the defibrillator in action – the ambulance service will give you the code to open the storage box to remove the unit. On opening the unit

and switching it on (in some units this is now automatic) the defibrillator will "talk" to you instructing you exactly what to do, putting the pads in the correct positions on the patient's chest and waiting for the unit to analyse the heartbeat. It really is as straight forward as that. Phil was an excellent speaker, passing on his knowledge in a very easy manner, with some humour, which gave us confidence that we would know what to do in an emergency. For such a serious subject, we all felt it was a very positive and worthwhile evening thanks to Phil.



Hinckley Hollycroft

Stephanie and Trevor Mee kept us enthralled with their tales of being self-styled Game Show Junkies. Stephanie started applying for game shows in the hope of making money after she became a single parent. She had considerable success and even landed a husband when she met fellow junkie Trevor. The prize money from a couple of the shows helped towards their wedding finances and her wedding dress was funded by Vernon Kay's 1000 Heartbeats. Together they won Pointless and members were amazed to see how small the trophy was - about the size of a coffee mug, although it is heavy. Although the majority of the presenters they met were lovely, not all measured up to their TV profiles. They are still entering competitions so look out for them on future programmes. They finished their talk with a fun quiz for members. A very entertaining evening with highly recommended Speakers.



Hinckley Canalside

After our annual meeting and election of our new President, Mandy Cutler, we had the pleasure of the Jerusalem Jammers attend our meeting. This is a group of dancers who are WI members. They wore brightly coloured dresses and props including, sticks, garlands and wooden spoons. They paraded in and danced several dances, encouraging our members to participate. The history of the dances was all explained by the very talented accordion player. They kept us entertained and cheered us all up on such a miserable wet November evening.



Ullesthorpe



We were delighted to welcome Tom Phillips to our September meeting. Tom is a wedding cake baker and chocolatier. His business Hannah's Chocolate was established over 20 years ago.

We were given a demonstration of making chocolate and working with chocolate to make wonderful edible scenes, animals and many other

delights. Tom made an amazing raffle prize as well as giving each member a handmade chocolate.

The November meeting was the AGM. The President, Jean Eastell stood down after six years and Sandy Dakin was elected as new President. A new committee was formed. Jean was thanked for all her hard work and bringing in new ideas. Membership has increased and we are looking forward to more events post Covid.



Cossington

In November, Bishop Peter Fox, the only Bishop who is a member of the Magic Circle, entertained Cossington members with his talk titled 'The Magical Mystery Tour'. Peter took his audience on a magical journey from Egyptian times to present day. An evening, full of tricks, humour and of course audience participation was enjoyed by all.

Janet Kitching, President of Cossington WI, proved to be a capable assistant to Bishop Peter Fox.



Anstey

Before the business of their annual meeting, Anstey WI heard from Sean O'Hara, who is employed by Leicestershire County Council as a Community Recovery Worker Public Health. The role was created during the pandemic, to support individuals and groups struggling with isolation, loneliness, lack of confidence, fear of going out and health and wellbeing. Sean spends time in the communities he serves, including Anstey, meeting potential recipients of his services. Members were able to tell him about the group of ladies who meet on Thursday afternoons in the library, the Cinnamon Trust and the food bank run by St Mary's Church. Sean instantly agreed to visit the last mentioned in the week following the meeting, so his talk was mutually beneficial.

Angela Rossa, who is stepping down from the committee and her role as programme secretary, was thanked. Several winners of the cups that were due to be presented were absent, so the presentations were deferred until December.

Members were then able to work on pine cone characters kindly prepared by Jill Taras, adapting or simply decorating them. A few are shown in the photograph, as well as Angela receiving her thank you gift.



Thurnby and Bushby

Thurnby and Bushby WI held their Annual Meeting in November. After the business was concluded we had a fun time making Christmas gift boxes. Thanks to Loraine our treasurer and a member of the federation Arts and Crafts Committee for organising it.



Birstall and Wanlip

Birstall & Wanlip WI and friends have been busy crafting this year to have a stall at the Birstall Methodist church Christmas festival. They also decorated a Christmas tree in WI colours to represent My WI in the church.



Newton Harcourt



The birthday was accompanied by a display in the village Reading Room, produced by Newton Harcourt villager, Catriona Scott, of the 100 year history of WI in the village. Catriona had dug deep into village and County archives to produce an impressive display which was open for several days for local people to visit.



The lunch was a lovely occasion. The guest of honour was County Chair, Glenice Wignall, members and former members were invited. All reported having a great time with fun and rich fellowship.

New Barkby

President, Shirley Franklin, welcomed members to the institute's November meeting; also, it was the annual meeting. Following on from the Secretary's and Treasurer's report, members heard from the President, how supportive members had been in attending meetings and events, especially through challenging times during the past year.

Nominations were taken for the President's role, and Shirley was re-elected to serve a further year.

During refreshments, Hannah Coombe, a founder member of 'Grow, Give, Live' gave an informed talk on a proposal to turn a one and a half acre piece of council owned land on Glebe Way in Syston, with support from Charnwood Borough and Syston Town Councils, into a sustainable community garden. Shirley thanked Hannah for visiting the institute.

Wednesday November 9th New Barkby will celebrate the birthday of the institute with an evening meal – 97 years of age and still thriving.

Botcheston

In October we held our AGM and the current committee were re-elected en bloc – obviously we are providing a range of activities that suits our members (hopefully).

After the business side of the meeting we held a bring and share supper and there was a number of fun quizzes to partake in – or you could just have a natter.

If you would like more information about Botcheston WI, or WI in general please contact our secretary on 01455 821228.

Swannington

Members of Swannington WI marked the 70th Jubilee of the late Queen Elizabeth II by planting 2 trees in its bee friendly garden.

With the aid of a grant from the local authority, NWLDC, the WI were able to purchase the two trees - a Witch Hazel tree and a Crab Apple tree which will also provide additional support for the local bees.



Ashby Castle

Mary Tuckey our President gave a very interesting talk titled "Dress/fashion throughout the Centuries" Mary explained the different fabrics, told us about the fashions from Queen Elizabeth 1st right up to present day, so a History lesson into the bargain. Mary brought along lots of materials for us to look at, lace, satin and velvet to name a few.

Wedding dresses were of course discussed leading to quite a few of our Members posting their Wedding photos on our Facebook page. How fashions change not to mention how young we all looked.



Waltham on the Wolds



We welcomed Tom Phillips to our November meeting, he talked and demonstrated all about chocolate. It was absolutely fascinating, and we learnt many new facts about chocolate.

He made this delightful snowman and also a tray of truffle chocolates which he handed around amongst us, very delicious.

He was kind enough to let us put the snowman in our raffle, plus some of the chocolates. A most indulgent evening, we can highly recommend him!





Tired of waiting lists?

Get in touch with the East Midlands' only dedicated private eye hospital for a no-obligation consultation – a warm welcome guaranteed

0116 270 8033

www.thestoneygateeyehospital.co.uk



ON GOOGLE REVIEWS

4.9/5 stars from over 200 reviews



Creating big smiles
all round

01858 540 317

01572 898 147

0116 298 4744

homeinstead.co.uk/mh



Each Home Instead® franchise office is independently owned and operated.



Nothing to Wear ?



Well why not have an **SOS FASHION SHOW**

www.charityfashionshows.co.uk

07860 142121

We come **FREE** of CHARGE!

You keep every penny you generate from ticket sales, wine, cakes, raffles.

Latest High Street Stores clothing at HALF price or less.

Suzanne Silveston

Managing Director | SOS Charity Fashion

Please send material for County News to **WI House** by email: wihouse@irfwi.org or post to arrive by the **FIRST** of the preceding month at the latest.

Advertising Rates

WI Announcements 5p pw
For sale/wanted (WI only)
5p per word text only. £5 per column inch with graphics.
Minimum charge £3.00
Charity rate £5.00 per column inch
Commercial rate (including WI members business advertising)
£9.00 per column inch

Discounts available for regular advertisers. Please pay on receipt of invoice only.

We do not accept any responsibility for any adverts published in County News.

Roberts
TRAVEL GROUP

Lets go places

- ✓ Day Trips
- ✓ Short Breaks
- ✓ Group Trips
- ✓ Private Coach Hire

01530 817 444

www.robertstravelgroup.co.uk



MARTIN TIBBLES

PAINTING & DECORATING SERVICES

For all your home and Exterior re-decoration requirements by a qualified tradesman.

Covid Vaccinated

Contact Martin on
0116 2910489 or 07855 412 945

Free estimates and advice given.
Excellent references
with nearly 40 years experience

CFS Computers

PC & Laptop Repairs
Virus Removal—Data Recovery
Websites—Screen Repairs

01530 231971

07815 810691



www.cfscomputers.co.uk