

Happy New Year with Open Meeting Successes

21 WIs have requested an open meeting grant so far. Most have events planned for 2025. Here are some WIs who have already gained members, increased visibility in their communities and enjoyed a different event with the help of the grant. This is the write up by each WI.

Hoby, Brooksby, Rotherby and Ragdale WI 'We held a free open meeting where Toni Davis spoke about her journey as a convoy driver delivering donated pickup trucks to Ukraine. Pickup trucks can swiftly remove injured soldiers from the battlefield and get them to medical aid resulting in a very high success rate for saving lives. Toni detailed her drive across Europe to the Ukraine border and her experiences whilst in Ukraine.



At the end of the talk a letter of thanks to Toni was read out from Natalia, a young Ukrainian woman who was persuaded by her family to leave Ukraine and come to Britain for her safety. A small section of her letter follows: *"On behalf of the people of Ukraine, I want to express our deepest and most heartfelt gratitude. Your support during this incredibly challenging time has not only been invaluable—it has been lifesaving. The war we are enduring is not just a fight for territory; it is a battle for our freedom, our identity, and our future"* For more information see: <https://www.pickupsforpeace.co.uk>

This excellent talk reached a wider audience than just our WI thanks to the WI Grant, which paid for our hall hire and refreshments'.

THORPE ACRE WI 'We held an open evening for local ladies to see what we do. About 15 ladies came and as well as displays and information some of our members were doing their craft work. Tea, coffee and home-made cakes were served. It was a most successful couple of hours with many of our visitors intending to take up our invitation to a free meeting in the near future. We have had 2 new members join so far'.



Birstall and Wanlip WI 'We had lots of guests at our open evening. Ringtons came and told us about the family business and history. This gave ladies plenty of time to chat, drink tea and eat biscuits. After that the sales tables opened and everyone went home carrying all the Christmas gifts they had purchased—we are hoping for new members to join in 2025'.



| | | | | |
|--|---|---|---|---|
| <p>Federation Chairman Glenice Wignall glenicewignall@lrfwi.org</p> | <p>Federation Treasurer Mary Hobbs maryhobbs@lrfwi.org</p> | <p>Federation Secretary Sandra Woodward fedsec@lrfwi.org</p> | <p>Admin Assistant Lois McKinder wihouse@lrfwi.org</p> | <p>Finance finance@lrfwi.org</p> |
|--|---|---|---|---|



Leicestershire & Rutland Federation of Women's Institutes

incorporated in England and Wales as a Company limited by Guarantee No. 02769771 Charity Reg No. 1016 766

WI House, 135 Loughborough Road, Leicester, LE4 5LQ

Tel: 0116 2661342 Email: wihouse@lrfwi.org

Opening hours: Mon-Thurs 9.30am—1.30pm

www.leicestershire-and-rutland.thewi.org.uk or scan QR code

Find us on Facebook: Leicestershire & Rutland Federation of WIs



From the Board



A very Happy New year to you all.

We continue to work on the issues raised at the Have Your Say meetings in 2024.

We are considering options to have events at venues other than WI House to make it as accessible as possible to WIs for next year's programme.

We have a subgroup developing a bid for the Denman Grant which can provide educational opportunities. As ever, do contact us with any ideas you may have.

Nominations for the Board have been sent to Secretaries.

Thank you all for your continued support to the WI. The history and legacy is strong and the difference WI has made, and continue to make, is immeasurable.

Whilst there are some challenges we continue to be strong, gaining new member requests each week and do amazing work in our communities of women.

May 2025 be healthy and happy for you all. Glenice Wignall, Chairman



From the House



It was great to hear from Hoby, Brooksby, Rotherby and Ragdale WI doing good work connecting to the possible Resolution 4: Eliminate landfill of medication packaging (see page 4).

A WI highlighted this issue two years ago in County News. The article was just a couple of sentences long, but mentioned how to recycle tablet blister packs at Superdrug pharmacies.

Hoby & District WI set about collecting blister packs at meetings, it was then mentioned at a church meeting and a collecting partnership was born. Superdrug have a long standing relationship with Marie Curie, raising large amounts of money every year for this worthy cause and initially, blister pack collections were in some way connected to this. However, blister pack collections now appear to be a purely recycling effort and small quantities can be placed in the Superdrug pharmacy designated collecting bins. Over the past two years between the WI and

All Saints Church, Hoby have collected many sacks of blister packs. Due to the large volume of

the collections, an arrangement was made with the nearest Superdrug pharmacy to use their approved sacks, so that their staff are spared any extra work. This involves making sure that the blister packs are free of elastic bands, bags and any other random items that find their way into the large green frog collecting point, sited in the church.

Sue, the Secretary says 'Whilst this takes up time every week it has been an excellent community effort, whilst also highlighting the volume and scale of blister packs heading towards landfill sites'.

In other news, our IT contract came to an end so we have swapped and saved money by using a local IT provider based in Birstall. We have also swapped our printer provider to a Leicester based company for a better and less expensive service. As we review all services for value for money, we will report on overall cost savings in the New Year.

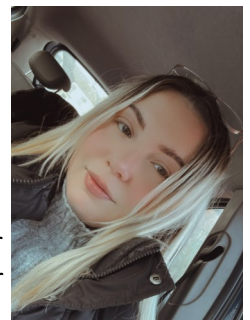
PAT Testing allowed WIs and individuals to get electrical items checked—we kept our tester busy!



Have a wonderful 2025 and thank you for all the fun and friendship you offer us at the Federation.

Sandra Woodward, Federation Secretary

Lois McKinder, Administrative Officer
Bookkeeper



&

Membership Committee

The LRFWI Membership Committee is responsible for supporting WIs. Do get in touch if you need help.

Mandy Cutler, Membership Committee Chair.

Subscriptions 2025 -26

The NFWI Board of Trustees has set the membership subscription for the 2025/26 membership year at **£51.00**.

This means there will be a £3 increase from the current membership year: £1.50 of this increase will go to WIs, 75p to federations and 75p to NFWI

The distribution of the 2025-26 subscription will be:



| Total subscription | WI share | Federation share | NFWI share |
|--------------------|----------|------------------|------------|
| £51.00 | £25.10 | £12.05 | £13.85 |

Payments will be due from members in **April 2025**.

Flexibility Policy

WIs can apply the flexibility policy to their 2025/26 subscription. This means they can charge the full amount of the WI portion, reduce their portion, or waive the WI portion of the subscription entirely.

Dual Membership

Dual members will pay the WI portion only to their second WI. If the WI is not utilising the flexibility policy, this will be £25.10. There is no pro-rata rate for dual membership, and the set fee will remain payable at any time during the year.

2025 - Time to Celebrate?

[Congratulatory and Thank You certificates](#) are available on My WI.

Go to Running your WI, Resources and Guidance, Certificates or click on this link:

<https://mywi.thewi.org.uk/running-your-wi/members-resources/certificates>

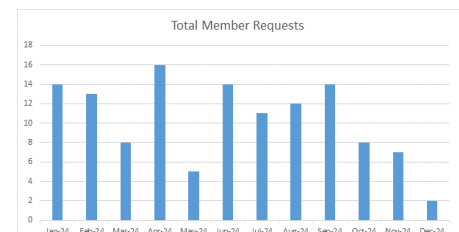
Just click on the certificate, customise if you want and print off!



Finance and House Management Committee

We currently have 109 WIs across Leicester, Leicestershire & Rutland. We have approximately 3400 members which has stayed fairly consistent since the pandemic.

Here are the new WI member expressions of interest per month at Dec 4th 2024.



Resolution Shortlist 2024-25 – Make your selection

The shortlisted resolutions are:

1. Let's talk about incontinence

It is estimated that 14 million people in the UK of all ages are suffering with bladder problems, and a further 6.5 million with bowel problems. However, it is still a subject that is misunderstood and very hard to talk about. We call upon the UK Secretary of State for Health and Social Care and Wales' Cabinet Secretary for Health and Social Care to examine in detail all areas of health and wellbeing that are affected by incontinence issues. We call for the government to commit to an up-to-date audit to provide a national picture of incontinence care, offering a baseline from which to drive improved services. We call upon the members of the WI to raise public awareness, remove the stigma around incontinence, to help reduce the significant impact on people's lives.

2. Bystanders can be lifesavers

There are over 30,000 out of hospital cardiac arrests a year in the UK, and less than one in ten people survive. Women have a lower chance of surviving than men. Early cardiopulmonary resuscitation (CPR) and defibrillating can more than double the chances of survival. We call on WI members to work together to increase public confidence and training in the delivery of CPR and to work with local organisations to help to improve access to defibrillators in their communities to give every person the best chance of surviving a cardiac arrest.

3. Join the repair revolution

There is a huge excess in clothing production which has devastating consequences for the environment. The WI calls on the UK Government to join the repair revolution and strengthen the law and investment to support a circular economy of clothing and fabrics in the UK, where repair and reuse is achievable, accessible, and affordable to all. We also call on WI members to promote clothing reuse and repair in their communities.

4. Eliminate landfill of medication packaging

Medication packaging, due to its complexity, is not routinely recyclable through local authority collections, usually leading to disposal in landfills. We call on the WI to proactively raise awareness by encouraging additional collection points where empty packaging can be easily returned for recycling. Furthermore, we call on manufacturing companies to acknowledge their moral responsibility to reduce their environmental impact by exploring simpler packaging alternatives that are easier to recycle or have less impact on the environment. These steps can significantly improve recycling rates to move towards eliminating landfill.

Next steps

Every member now has the opportunity to cast their individual selection on the resolution they support the most. WIs are encouraged to hold meetings to provide members with the opportunity to discuss and learn more about each resolution. However, if this is not possible members can research the issues themselves and make their selection.

The selection slip can be found in the November/December issue of *WI Life*. A copy of the selection slip can also be downloaded on My WI.

Selections must be shared with your federation, and the deadline for this is 9 February 2025.

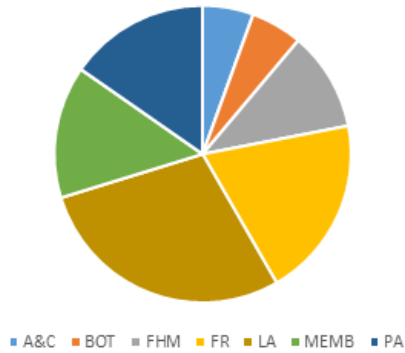
If you have any questions about returning your selection slip, please speak to your WI committee or your federation.

You will find a number of resources which are available for each shortlisted resolution to support you in casting your selection on My WI here: <https://mywi.thewi.org.uk/public-affairs-and-campaigns/news-and-actions/resolution-shortlist-2024-25-selection>

If you have any queries please contact NFWI Public Affairs team at pa@nfwl.org.uk

Event Bookings by Committee

NUMBER OF BOOKINGS 2024



The Committees work hard on WI projects to benefit the education, social and leisure activities of WI Members.

This includes supporting WIs on their programmes, linking with the Resolution, liaison with charities and supporting the aims of the WI.

If you would like to get involved do contact WI House to come and observe a meeting.

| COMMITTEE | NUMBER OF EVENTS 2024 | NUMBER OF BOOKINGS 2024 |
|-------------------|-----------------------|-------------------------|
| Art & Crafts | 8 | 78 |
| Board Of Trustees | 8 | 79 |
| Finance & House | 4 | 152 |
| Fundraising | 7 | 278 |
| Leisure | 19 | 402 |
| Membership | 6 | 203 |
| Public Affairs | 8 | 216 |
| TOTAL | 60 | 1408 |

Art and Crafts Committee

We had a very busy Dabble Day in November. There were a variety of crafts on offer, some more challenging than others.

Everyone had a go and were pleased with their final efforts. You can see in the photos they all look pretty good.

Look out for our Spring Dabble day when it is advertised to try your hand at some different crafts!



I would like to say a very big 'thank you' to everyone involved with today's crafting day. The atmosphere was welcoming and the ladies demonstrating were helpful, patient and friendly - not forgetting the tea ladies who made a smashing cuppa.—Lindsey



Events - What's Coming Up?

| | | | |
|----------------------------|------------------------------|--------------------------|-----|
| Mon 3rd March | Race Night with fish n chips | Stoke Golding Club | £15 |
| Sat 29 th March | ACM | Leicester Grammar School | £16 |
| Thurs 24th April | Speakers Showcase | Scraptoft | £5 |
| Wed 2nd April | Treasurer Training | WI House | £5 |
| Wed 30th April | Resolutions Briefing | WI House | £5 |
| Wed 7th May | Faith Visit | Leicester | £8 |
| Sat 10th May | Spring Lunch | Devonshire Place | £32 |
| Wed 18th June | Bletchley Park Visit | Bletchley | £45 |

Quiz

"BEST DAYS OF OUR LIVES" QUIZ 2024

There were only 87 entries returned for this quiz, out of which none were all correct. There were just 10 entries which achieved 49 out of 50 though and the first one of these drawn out at random came from Sue of Kirby Muxloe WI who has received her £25 prize - well done Sue! I must apologise once again for the error contained in Clue 29 which I suspect accounted for the 'low turnout' in entries. Because of this error which was entirely my fault, I decided to give everyone 1 mark to start with, thus every entry was then still marked out of 50.

If you sent an SAE or gave an email address with your entry, your paper or the answers have been returned to you. Do remember that even if you don't complete your quiz sheet, it's always worth sending it in to me with an email address or an SAE because that way I will always respond with the answers after the closing date. You should send it in anyway with a £1 coin attached if you are on my Subscribers' list of course.

Here are the answers:

1. R-R-R; 2. MATHEMATICS; 3. ENGLISH LITERATURE; 4. BLACKBOARD; 5. CHEMISTRY;
6. DESK; 7. GERMAN; 8. HISTORY; 9. PLAYGROUND; 10. PHYSICAL EDUCATION;
11. BIOLOGY; 12. GENERAL STUDIES; 13. LESSONS; 14. PHYSICS; 15. DETENTION;
16. GYMSLIP; 17. CERTIFICATE; 18. BLAZER; 19. SACHEL; 20. CLASSROOM;
21. GEOGRAPHY; 22. HOMEWORK; 23. INKWELL; 24. HEADMISTRESS; 25. PREFECT;
26. FRENCH; 27. REGISTER; 28. ASSEMBLY; 29. (XXXXX); 30. CLOAKROOM;
31. TEACHER; 32. MUSIC; 33. STAFFROOM; 34. LIBRARY; 35. UNIFORM;
36. LEARNING; 37. EXAMINATION; 38. STUDENT; 39. LABORATORY;
40. FOOD TECHNOLOGY; 41. DRAMA; 42. BELL; 43. CARETAKER; 44. WHITEBOARD; 45. SPORTS FIELD; ACADEMY; 47. CITIZENSHIP;
48. COMPUTING; 49. GYMNASIUM; 50. ART

Best Days quiz made £168 for County Funds, so thank you loyal quizzers for your support. My latest quiz: "In Neptune's Kingdom" is currently available with a closing date of 7th February 2025. If you'd like to go on to my Subscribers' list, just send me an email via WI House, headed up: "Quiz Subscribers", and I'll tell you how it works. Additionally, if you don't already have a copy but would like one, then again, send me an email via WI House and I'll get one back to you by return. Alternatively, if you are down at WI House, you can pick one up in Reception and remembering to put a £1 coin in the jar. Best wishes for much health and happiness in 2025 to my Happy Quizzers everywhere! Sue Lobb

Monthly Draw

Congratulations to our Monthly Draw winners!

- 1st Prize £25— Lissa Stewart, Hollycroft**
2nd Prize £15— Sheila Meredith, Shearsby
3rd Prize £10— Jane Faulks, Waltham on the Wolds



Thank you to all of the members who have supported the Federation by buying a Monthly Draw ticket!

Race Night



Monday 3rd March 2025

7pm- 9.30pm

Stoke Golding Club, 42
Hinckley Road, Stoke
Golding, CV13 6DZ

£15

Fish and Chip Supper

Treasurers Training

Weds 2nd April 2025



10-12.30

WI House

£5—paid by WI

SPEAKERS' SHOWCASE

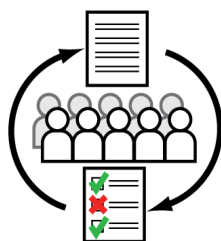


Thursday 24th April 2025

Goodwood Bowls Club

8A Crofters Drive, LE5
2FH

Resolution Briefing Meetings



Wednesday 30th April
2025

2pm & 7pm

WI House

£5 per 2 members per WI

Gurdwara Visit



Wednesday 7th May 2025

10.30am -12.30pm

£10 to include
refreshments

Bletchley Park



Wed 18th June

Coaches from

WI House & Burbage

£45 to include
refreshments (lunch
available to purchase)

If you want to book as an individual, use the booking form on our website
under Federation Downloads

—email the form to wihouse@lrfwi.org or call 0116 2661342

If you want to book with your WI, contact your Secretary or Treasurer

Markfield

We held our annual fundraising Quiz Night at Coalville Rugby Club. This is always a popular event being open to members and their families with the quiz being accompanied by a ploughman's supper. The quiz master does a wonderful job keeping everyone in order and the Rugby Club staff look after us very well. We always complain that we played our joker on the wrong round and the questions are too hard but you either know the answers or you don't. Our congratulations go to our Treasurer's team who were the winners although the losing team looked quite pleased with their consolation Santa lollipops.



New Barkby

At New Barkby's October meeting, Lynne Grant from Hannahs of Quorn, gave a demonstration of creating a figure made from sugar paste, as she showed the artistry of "sugarcraft" using dough, kneaded, rolled and stretched with different colourings (all water-based).

An excellent creation to adorn a cake. Lynne has been working with sugarcraft for 30 years and still enjoys the creativity of it all.

Woodhouse Eaves

The weather was very cold on Wednesday night but a warm welcome greeted 16 members of Woodhouse Eaves Women's Institute who met for the AGM. The meeting was followed by a cheese and wine buffet. The president Hilja Skorupa welcomed everyone. She thanked the helpers who had contributed to making the recent Bingo Evening a great success. Hilja also thanked Monica for hosting the Christmas Craft Workshop at her home.

Thanks were given to Sue Young for running the raffle, Gwen for taking the register and hostesses Sue Palfrey, Angela and Janet. Birthday gifts were given to members with birthdays this month. There was a Christmas Tree Festival at St Paul's Church, and the WI has a beautiful tree designed by Sian. Carols and Cakes were at the Methodist Church on Thursday December 12th at 4.30pm.

The Christmas Lunch was on the December 16th. Members were thanked for knitting poppies for the Remembrance display and Jane Faulks was thanked for laying the wreath.



Cossington

We welcomed Steve Budding to Cossington November Members Meeting. Steve had owned a Nursery for nearly 40 years and he came and demonstrated not only wreath making but other floral Christmas decorations.

We were astonished when Steve told us of the large quantities of wreaths they made each Christmas. He then went on to tell us that hanging floral displays had become popular as people wanted something a little different, plus baskets and table decorations. The decorations were then raffled.

Whilst he was demonstrating he entertained us with amusing stories. Such an entertaining evening.



Nailstone

November was a busy month for us as we prepared for our first Group Meeting as part of the Bosworth Field Group. The theme was Christmas. We had a stand displaying Christmas themed crafts made by members and there were individual competitions. We picked up a First, 3 Seconds and a Third place in the individual craft and cookery competitions.



Some of our ladies also visited the Hotters shoe shop at Dobbies, Atherstone where there was a talk, refreshments and lots of trying on of shoes. Everyone went home with shoes and a goody bag kindly supplied by Hotters.

We held our AGM. After the official business was out of the way we had lots of fun making penguins for our Christmas window in the church.



Loddington

As a competition to accompany our recent speaker we challenged our members to write an ode to our WI. The winner was selected by the speaker.

Here's our winner written by Avril Wilkins.

Ode to Loddington WI.

If you ever feel lonely and sometimes you will
 If life is difficult climbing that hill
 Cherish the friends with a welcoming 'Hi'
 We are a family, the WI

Crafting and baking but that's not all
 Many more activities set out our stall
 Walking and bowling, win or lose we laugh 'till we cry
 That is the joy of our WI

Young or old who is to care
 We all love to try and share
 a piece of that good pie
 which is our Loddington WI.

Around the Counties

Wakerley and Barrowden



Our longstanding member Peggy Sparrow from South Luffenham celebrated her 100th birthday.



We celebrated her birthday with flowers and a cake.

Countesthorpe

We held our AGM in November and it was very well attended. We also asked members to bring along a homemade pudding on the night for us all to try. Each member was given a pudding sticker to lay against their favourite.

“A cloud of grapes “ came 1st and a Bread and Butter pudding 2nd. Everybody really enjoyed the evening and pudding tasting was a great success. We are looking forward to our Christmas Meal in early December and Carol concert for the Cromwell Group.

Groby

In October, we were joined by some local U3A members to go to the Shuttlewood Clarke Foundation's Ulverscroft Manor for an Autumn relaxation day arranged by a member of both groups. We sat in the comfortable lounge and chatted, then were encouraged to take part in a game where our varied drawing skills were used to picture something to eat. (The picture quickly became a Christmas tree biscuit!)



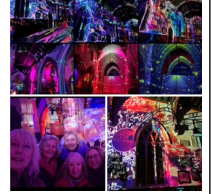
This was followed by a quiz performed in teams until our lunch was ready. Roast beef and all the trimmings, all nice and hot and cooked to perfection. Pudding was a delicious fruit crumble and custard. The Autumn colours were spectacular and as we climbed the hill to visit the charity shops at Ulverscroft Grange we had the most beautiful views.



A bursary of £200 had been won some some time ago by our previous President, Angela Taylor, but then Denman College closed and she has since used the bursary on a local quilting course. She brought her beautiful quilt to our November meeting to show members, and plans to make further more advanced pieces.

Leicester Ladies

Prior to our meeting, some members experienced the wonderful colours of the light show within Leicester Cathedral. Luxmuralis' light and sound creation 'Space' illuminated the inside of the building. The fully immersive light and sound show tells the story of time and space, projected onto the building's stunning architecture.



We then carried through with the coloured theme when we welcomed our speaker Jacqui from 'Seasons Change' to give us an overview of Colour Analysis.

Jacqui gave a really interesting presentation as to what colour analysis is, we used drapes and colour fans and learnt how it helps to decode our unique colour palette, guiding us toward the shades that harmonise with our individual colouring. The aim is to feel good about yourself, utilise the wonderful array of colours available in the fashion world and have fun and feel excited every day when getting dressed.

We held our meeting at The Phoenix, in an upstairs room and we have agreed that it is a fantastic venue. It has everything that we have been looking for. There is a lift between floors and with the adjacent car park, we hope to encourage more women to come into Leicester, who may have been concerned about having to walk through town on dark nights, to join our lovely, friendly group and to benefit from being part of the WI.



Bosworth Field Group

“ Gopsall Villages WI hosted our Group Show in Congerstone Village Hall in November.

We were delighted with the number of entries we received for the different categories. After the judges had made their final decisions for winning places the Show was opened to the public for the afternoon. Tea/coffee and plenty of cake was enjoyed together with lots of chatter. A most successful day made extra special by our talented and supportive members.”



Glenfield Park



Now, what would you consider to be a good birthday present? I bet it wouldn't be a spinning wheel and 16 sheep! This was Angela Dewes birthday present which sent her off on her crafter's journey, the subject of her talk to Glenfield Park WI. Having grown up in Wales she was used to woven blankets and she decided she would like to spin the wool from the fleece. Because she was successful with her spinning, she soon found she had more wool

than she needed for her knitting, and so as a diversification for the farm she went to craft fairs and sold on the internet and became a small business supplying knitted goods. A real success story.

We also learnt how different breeds of sheep produce different types of fleece, some much coarser than others. To finish her talk she gave a demonstration on her nifty, portable spinning wheel. It was fascinating to watch as she made it look so easy.

Around the Counties

Stoke Golding

At our October meeting we welcomed the Tin Hat Ukes to come and entertain us with some amazing playing. There was so much singing and laughter, we had to stop for a tea break part way through! The musical group is made up of around 20 members and formed during lockdown, online! Starting with a small band of just 4-6 players, it's gone from strength to strength.

Our November meeting started with our AGM. Sadly, we say good-bye to Mary Mc Grath and Carol Hale, who have stepped down from the committee after an amazing 40 years of voluntary service between them!! Over the years Carol has held most WI positions, president, Vice President and secretary. Mary balanced our finances splendidly for 35 years as treasurer. They will be greatly missed on the committee.



The rest of the evening was spent reminiscing over Christmas customs and traditions with Jo Golby, who brought back many memories of Christmases past. It is so interesting to find that many of today's traditions came from Victorian times.

Does anybody remember the joys of your Christmas Stocking with a piece of coal, a coin, an orange and a nut?

The one thing we all realised was the great differences between the celebration of the rich and the poor in those times. The wealthy enjoying their 15 course Christmas banquet cooked by the servants!!

Her top piece of festive advice from Victorian times.....Never refuse a mince pie when offered as it is supposed to be bad luck!! Happy Christmas everyone!

Illston on the Hill

We held our AGM in November. The meeting was conducted efficiently and all business was dealt with in a timely manner. Once the official business was concluded, members enjoyed a lovely meal prepared and provided by members.



The dining table was beautifully decorated creating a warm and welcoming feeling.

A special thanks was given to all members for their help during the course of the evening.

It was a perfect reminder of the wonderful group of ladies who make up Illston on the Hill WI.

Glenfield

We enjoyed a 'crafty' afternoon this month, when our invited speaker, Caroline Boulter, brought along a selection of handmade crafts to show us. She talked about her love for creating things from fabric and showed a few beautiful examples of her work. She then guided us in the making of miniature Christmas Trees from fabric circles. Members applied themselves to their task with enthusiasm and there was plenty of shared laughter as we helped each other to make the trees. Everyone was pleased with the final result and we were able to go home with a handmade tree to add to our Christmas decorations this year.



We were pleased to support Glenfield Hospital's endeavor to create a display of knitted and crocheted poppies in their Secret Garden for November 11th. Members of our craft group spent many hours producing poppies and were delighted to see the resulting display.

Hinckley Hollycroft

Karen Smith, a forensic practitioner from Juniper Lodge, gave us an insight into her work with sexual assault victims. It is understandably a difficult topic and she stressed the need for a multi-generational approach as internet porn exacerbates the problem. Although most referrals are via the police, anyone can refer themselves in confidence and receive a sympathetic response, knowing they will be believed. The centre operates a free and confidential service 24/7 throughout the year so help is always available. Emergency contraception can be obtained plus other medical protection if necessary. Men challenging other men's behaviour is important and White Ribbon Day 'It starts with men' is a positive step towards changing attitudes to women and girls. Members were astounded at the statistics Karen gave and, although rape is the second most serious crime to murder, it can take up to 4 years for a case to be heard in court due mainly to under-funding and availability of witnesses. Karen urged members to watch a Leicestershire police You Tube video, the first of a series of videos to highlight the fact that more evidence can be preserved if rapes are reported early.

Hathern

We recently celebrated 100 years of the forming of the first WI in Hathern. This was held in the Charity Room and 25 members enrolled. It was thought this number would have been larger but for the fact Monday was washday so they arranged to move the meetings to a Thursday evening. Meetings followed a format very much the same as now, with Business, talks and demonstrations - and a social half hour. The social half hour was very important and the most popular time when the wife of the Schoolmaster read stories aloud. Just imagine on a winter night with a coal fire, cheerful curtains brought by members, And listening to a good story. No TV in those days.

In 1939 war came and the Institute was closed until being reformed in April 1946. because of this break Hathern WI cannot claim its 100th birthday for a few years yet. During our celebration Sheila Swift, our longest serving Member, cut the cake.



Around the Counties

Wigston Magna

In October The Cromwell Group hosted the Group Meeting. There was a large attendance and the evening was very successful with a hot meal followed by cakes and trifles. The entertainment was provided by the Jerusalem Jammers which included audience participation!



Our November meeting featured a Festive Fayre tasting event where members voted on what they liked and would consider buying, out of a selection of crisps and biscuits etc.

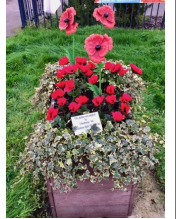


Ullesthorpe

In October we listened to a very positive talk by Terri Mclean-Bowman about Cancer Research. As most of our members have been personally affected by cancer it was a difficult subject to take on. Terri was excellent. She told us about the progress made in detecting and finding cures for cancer.

She approached the talk with humour, her personal cancer journey and scientific facts made easy to remember by playing a Bingo game.

In November we moved back into our refurbished Village Hall and did a quick tidy up on our village planter in time for Remembrance Day.



Anstey

We began our November meeting with a tribute to member and former president Sheila Price whose sudden death two days earlier had shocked us all. A tribute to her was followed by a minute's silence, and later we toasted her with sloe gin, a tippie she used to make. She was a steadfast servant of the WI and a wonderful support to us all. She will be much missed.

The formal annual meeting followed, with reports reminding us what a good year it had been. The hall then became a hive of industry, with members making Christmas tree decorations under the guidance of committee members Liz Heggs, Jan Darby and Jill Taras. Where would we be without our hardworking committee?



Ratby

For this month's meeting our theme was Christmas Crafts. The ladies enjoyed making candle jars, clay and gem tree decorations, cinnamon and orange pomanders and woollen snowman heads. It was a lively evening as people moved around from table to table chatting and having fun.

In other news we were sorry to say goodbye to our President Margaret Robson who will be sorely missed as she had been an important part of the group for many years.



Broughton Astley

After our AGM, we were joined by the talented Carolyn Boulter, who guided us all through making a Snowman to decorate our Christmas tree at our village Christmas Tree festival. Carolyn had prepared a pack for each member containing all the necessary components to make a cute snowman's face and with lots of help from her, and much chat and laughter amongst our members, we all succeeded in crafting a delightful decoration!

Our Remembrance poppy displays around our village have been well received again this year, especially our new nets of poppies over the hedges surrounding our memorial garden, which were really stunning.



Thringstone

Dave Andrews our speaker was celebrating the 100yr Birthday of the BBC. From being under Lord Reith to the present. Dave was a former BBC Radio Presenter and Producer. He is currently a Deputy Lieutenant of Leicestershire. We enjoyed the nostalgic audio and video clips from programmes and events of the past.

We listened to the first Christmas broadcast from King George V, to laughing seeing again Muffin the Mule. We watched the late Queen's Coronation and many more extracts.

Looked at a copy of the Radio Times including Leicester in for the first time. The first local radio station began on 8th November 1967. What an evening, what memories.



News to **WI House** by email: fedsec@lrfwi.org or post to arrive by the **FIRST** of the preceding month

Make sure to include the name of your WI with your article

Please try to keep Around the Counties articles to 120 words and 2 photos so we can include as many as possible and save paper, ink and postage costs.

Articles may be edited.

County News will be emailed, posted on Wednesday of the third full week of the month.

Advertisements

Wishing all WI Members a Happy New Year!

From all staff and Board of Trustees of LRFWI Federation



GIVE YOUR OVEN THE SHOWROOM LOOK WITH

Oven Magic
THE OVEN CLEANING SPECIALIST

- Removes Grease and Fat
- Destroys Burnt On Carbon Deposits
- Caustic Free Products
- Fully Trained Operatives
- Hobs, Extractors, Microwaves



★ Phone For A Free Quote
Tel: 0116 239 0579

MARTIN TIBBLES

PAINTING & DECORATING SERVICES



For all your home and Exterior re-decoration requirements by a qualified tradesman.

Covid Vaccinated

Contact Martin on
0116 2910489 or 07855 412 945
Free estimates and advice given.
Excellent references
with nearly 40 years experience

Education

Please contact SIRM directly for more information and opportunities for workshops.

SIRM

SIRM Now Offering

FREE STUDY SKILLS WORKSHOPS AND PLACEMENT OPPORTUNITIES

STUDENT FUNDING AVAILABLE
Subject to eligibility

ENROL NOW

For more information contact:

☎ (44) 116 218 5873
☎ (44) 7476963387

✉ Admissions.lei@sirm.ac.uk
🌐 www.sirm.ac.uk

📍 London Campus: Ilford Chambers, 11 Chapel Road, London, IG1 2DR

📍 Leicester Campus: Knightsbridge House, 12 Lower Brown Street, Leicester, LE1 5TH

HND FASHION AND TEXTILES

Jerusalem Jammers



We were thrilled to make over £400 for Children In Need at our tea dance despite having fewer people attending this year.

Huge thanks to our friends who supported us – they were excellent Maypole dancers – look at the perfect plait!

We practise once a month, usually on the last Saturday at St Andrew's Hall, Hinckley Road, Leicester Forest East, LE3 3PF from 9.45 am - 11.45.

Visitors are always welcome to come and see what we do. Google us or search for us on Facebook for further details.

For bookings please contact our Super Secretary Sue on 01455 458107.

Advertising Rates

Charity rate £5.00

Commercial rate (including WI members business advertising)

Please note we have made our advertising prices simpler!

| | Months 1 | 3 | 6 | 12 = 10% off |
|---|----------|-----|------|--------------|
| S | £15 | £45 | £90 | £162 |
| M | £20 | £60 | £120 | £216 |
| L | £30 | £90 | £180 | £324 |

Please pay on receipt of invoice only.

We do not accept any responsibility for any adverts published in County News.

Please send material for County News to **WI House** by email: **fedsec@lrfwi.org** or post to arrive by the **FIRST** of the preceding month at the latest.

Any WI announcements can be made in County News.

Monica (Wing WI) Member

Contracted by the Rutland Council to provide Home based care



- Do you need help with:
- Domestic cleaning
 - Personal Care
 - Medication and meals
 - Disability support
 - Hospital to home discharge
 - Live in carer
 - Respite care and holiday support
 - Help with pets



For a CQC registered, safe and trusted carer
Call Monica 07716183474
Office 01536605365

Percorra North Northamptonshire
2 Tresham Street
Kettering NN16 8RS



Creating big smiles all round

01858 540 317
01572 898 147
0116 298 4744
homeinstead.co.uk/mh



Each Home Instead® franchise office is independently owned and operated.

